

**TERMINAL**  
plus



GUIDING SYSTEMS	2
AIRPORT 4.0	6
AUTOMATED ACCESS CONTROL	8
INTERACTIVE DISPLAYS	10
SAFETY BARRIERS	12
WORKPLACE SAFETY	16
AIRPORT SAFETY	18
MOBILE WALLS	20
MOBILE MUSEUM WALLS	22
PUBLIC SEATING	24
LED PROJECTORS	26
DIGITAL LOCKING SYSTEMS	28

# Raising expectations



We offer professional services  
to provide terminals and more  
with modern functionality  
and design.

With over 10 years of experience and competence, we can advise you on the best possible solutions for an efficient and modern design of your terminal. We care about your ideas and offer a large portfolio of modern and high-quality products from leading manufacturers.

After an on-site visit, in combination with previously existing data, we can create your individual project. Our team will take care of the installation and be at your disposal when it comes to regular maintenance or questions.

If you have any questions about our solutions or if you are looking for further advice, information, training on hardware/software, please contact us, by telephone or e-mail.

Your satisfaction always has the highest priority for us.

## TERMINAL plus

Bocek Martin & CO Sas / Via Bolzano, 78 / 39011 Lana / Italy  
[www.terminalplus.eu](http://www.terminalplus.eu) / [info@terminalplus.eu](mailto:info@terminalplus.eu) / +39 340 603 6287





# Guiding systems



Via Guide is a specialist for integrated solutions in queue management, passenger flow and guidance systems in passenger terminals.

The extensive range of Beltrac® belt posts is characterized by a particularly high durability and meets the high demands of design and function, as well as material and processing quality.

The development and innovation department works continuously on new and innovative product developments as well as customer-specific solutions and requirements. As a result, the product portfolio is constantly being expanded and optimized.

In addition to a wide range of classic systems, Via Guide also offers intelligent solutions for real-time measurement of passenger numbers, passenger flow and waiting times, using sophisticated sensors and software.

With first-class products and high-quality, customer-specific solutions, Via Guide is an important partner for all passenger terminals.

## THE FEATURES AT A GLANCE:

- + High-quality products made in Germany
- + Patented and certified solutions
- + Wide range of products for indoor and outdoor use
- + Individual consulting, design and implementation
- + Flexibility in application
- + Intelligent solutions for the measurement of waiting times
- + Real-time passenger flow management



## BELTRAC® The Post.

The new Beltrac® belt mechanism has a **360° rotation**, which eliminates abrasion to the belt. You can arrange and modify the layout of your queue without moving the entire post. You decide the direction – the belt follows you!

The universal **belt-end** works with most other manufacturers' stanchions, allowing Beltrac® posts to be used in almost any existing queue.

Beltrac's embedded **belt mechanism** is made of high quality, durable plastic with a long life stainless steel spiral spring. Reliable and stable in function. Beltrac's slow belt-retract mechanism uses advanced visco-rotational dampers for controlled belt retraction; ensuring even more safety.



### MOBILE POST

Immediately usable, allows almost unlimited possibilities.



### MAGNETIC POST

Small diameter for optimized walkways. Easy to set-up and dismantle.



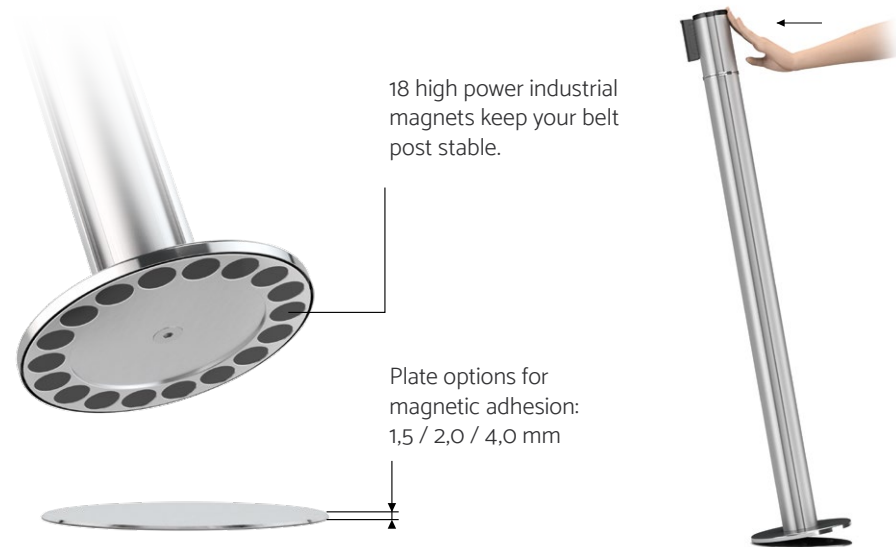
### REMOVABLE POST

This post can easily be inserted into the floor mounting. When posts are not in use, a cover plate conceals the hole in the floor.

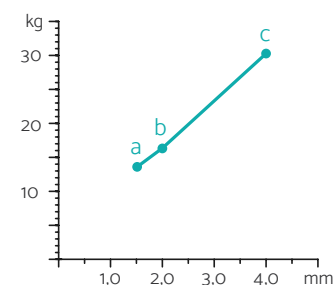


### MOUNTED POST

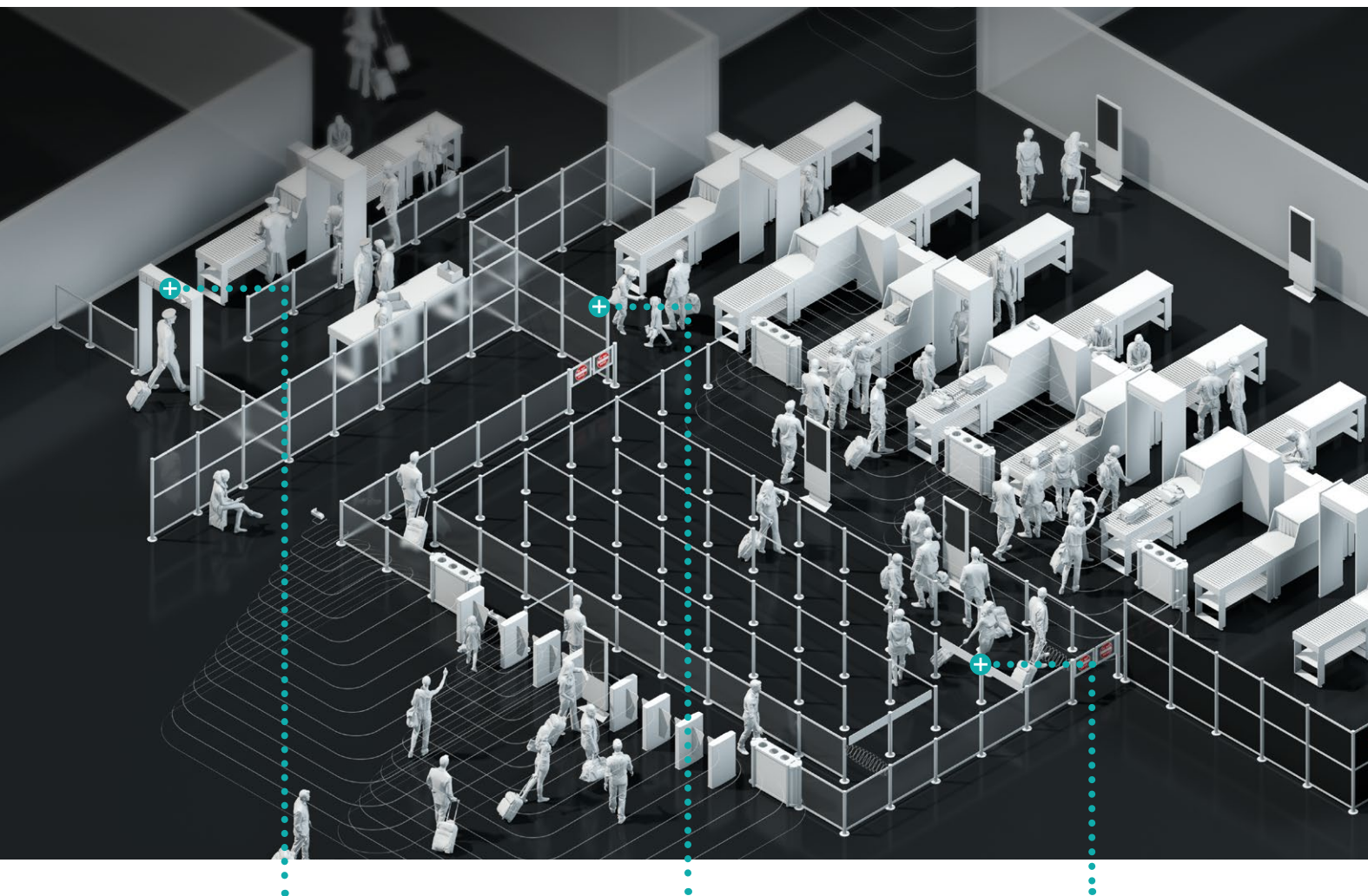
The base plate is mounted directly to the floor with screws.



Force needed to remove from the plate:  
a with 1,5 mm plate = 13,5 kg  
b with 2,0 mm plate = 16,2 kg  
c with 4,0 mm plate = 30,1 kg







### Smart Arch

Monitor and show



By scanning the passenger flow, the waiting time and filling level will be displayed.

### Nextrac

Dividing walls



A combination of Beltrac posts and different mounting options with Beltrac Crossbar straight barriers; or filling elements such as acrylic glass, aluminium composite panels or banners.

### Smart Gate

Queues according to your needs



The electronic rotational barrier allows you to reduce or extend queue layouts with a connection to a wait time measurement system (QRS, WQI or 3rd party data) or by simply pushing a button!

## Queue Control

This solution automates queues using our Smart Gate. It changes the walkways and layout of the queue, which means that the layout always changes in the same places, without the need for human intervention.

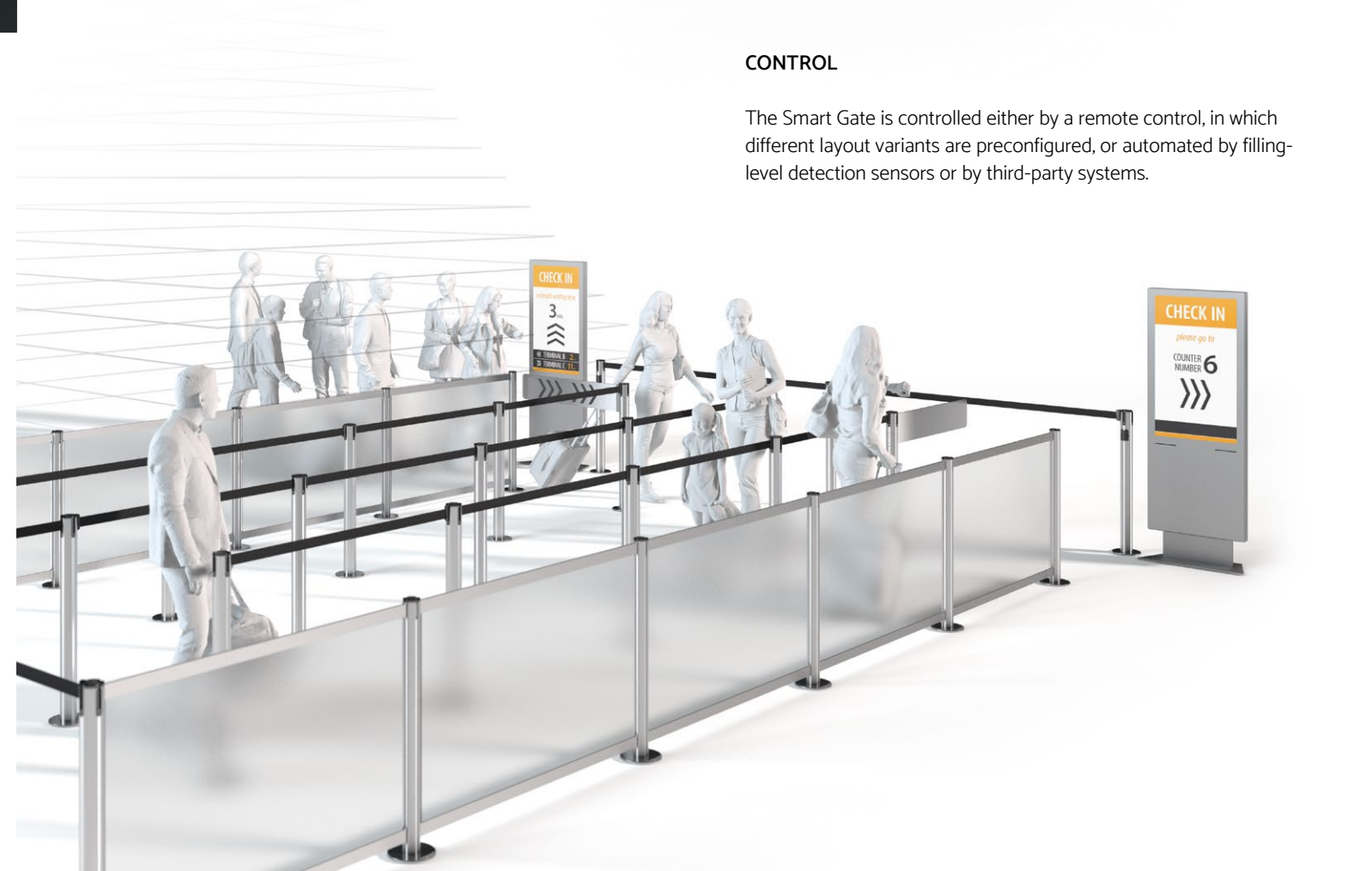


### SMART GATE

The Smart Gate is a revolving door integrated into a Beltrac post. One or two blades guide passengers in the queue. The revolving doors move at a speed of two seconds per 90°. The Smart Gate is powered by a rechargeable battery with a lifespan of approximately 3,600 opening cycles

### CONTROL

The Smart Gate is controlled either by a remote control, in which different layout variants are preconfigured, or automated by filling-level detection sensors or by third-party systems.







# Airport 4.0

QMETRIX

Airports need efficient processes and real-time information to cope with the increasing volume of passengers.

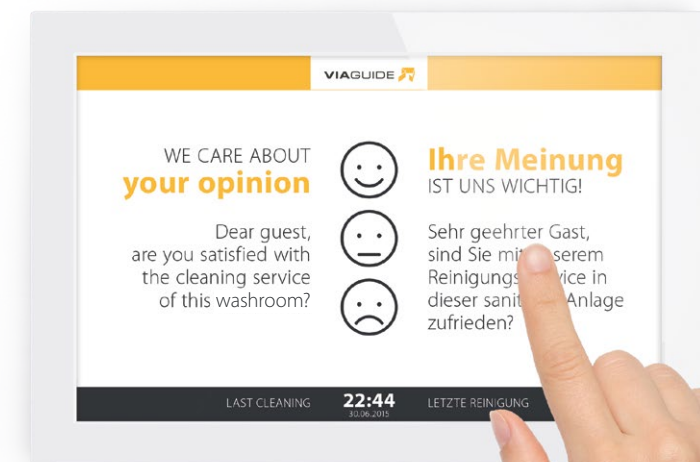
With laser and infrared sensors, processes can be precisely measured, analyzed and evaluated in real time at sensitive points in the terminal. The goal of shortening waiting times and accelerating passenger check-ins and handling can be better achieved with the obtained KPI's.

## PASSENGER FLOW CONTROL

Automated assignment to service points facilitates orientation and accelerates passenger handling. The length of the queue can be automatically adjusted in relation to the number of passengers. This optimizes passenger flow and avoids unnecessarily long walking distances.

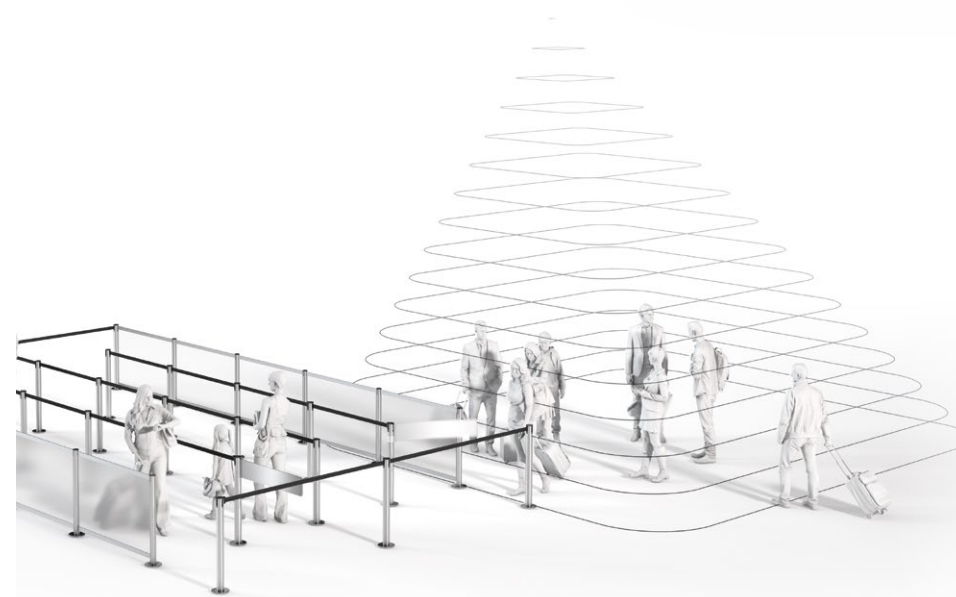
## QUALITY CONTROL

The feedback terminals give travelers and visitors the opportunity to evaluate the service they have found or the cleanliness of the washrooms at the touch of a button. The real-time data helps support facility management and contribute to immediate problem solving. This leads to higher customer satisfaction and optimized personnel management.



## CAPACITY MONITORING

The determination of filling levels outside of structured waiting areas is usually very costly, since the entire area to be measured would have to be completely covered by sensors. By measuring at defined points of access using QRS (Qmetrix ranging sensor), filling levels and access frequencies can be reliably determined with reduced installation and maintenance costs.



## COUNTING PORTAL

The "Counting Portal" is designed in such a way that it can be installed quickly and easily without much effort and can be used flexibly. While passing through the gate, hidden sensors register the direction and speed and provide the most accurate data on the number of movements.

Any static or dynamic information such as the current waiting time, signposting or access status can be communicated visually on a screen or an LED matrix panel.







# Automated access control



EASYGATE

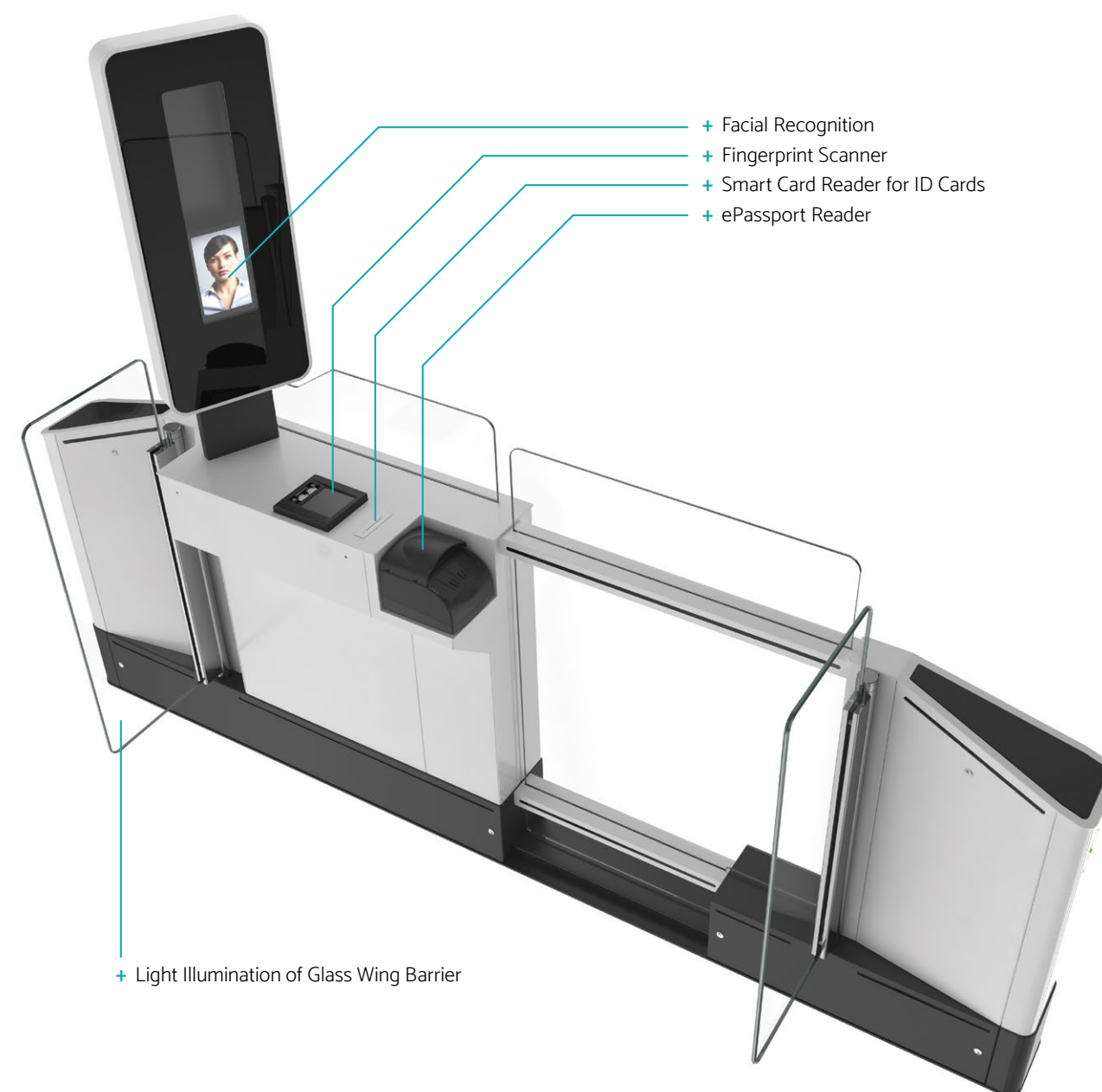
Security, reliability and efficiency are the most important criteria when choosing automated gates. In order to meet the constantly growing flow of passengers and the high security requirements, reliable access and control systems that can be positioned at various checkpoints of terminals are required.

These include security checks, border crossings or VIP lounges. Thanks to user-friendly automation with energy-efficient systems, the flow of passengers can be handled quickly and conveniently with maximum security, optimized personnel management and without interference. The significantly reduced waiting times ensure greater passenger satisfaction.

By linking it to other intelligent passenger counting systems, statistics and efficient personnel planning can also be created. Thanks to their simple and modern design, these space-saving systems fit into any type of terminal or public facility and are particularly environmentally friendly due to their low energy consumption.

## THE FEATURES AT A GLANCE:

- + Automated border controls thanks to e-Gates
- + High safety standard
- + Controlled passenger flow
- + Reduced operating costs through automation
- + Positioning at security controls, passport controls or gates
- + Access with boarding pass, bar or QR code, RFID & NFC
- + Facial recognition, biometric data, card reader
- + Reporting on passenger numbers, time, boarding passes,
- + Integration with other IT systems





# Interactive displays

## IMPRESS

The digital display “Impress” from the Munich manufacturer Friendlyway® offers the perfect combination of information and entertainment, the so-called Infotainment.

Friendlyway® is the leading German manufacturer in the field of visual communication and offers both hardware and software from a single source.

User-specific hardware configurations, software training and CI design create freedom for individual applications.

Impress, available in 42” and 55” versions, is probably the thinnest and most elegant digital display in the world and stands out with its simple but sophisticated design.

### THE FEATURES AT A GLANCE:

- + Interactive touch display with 24/7 function
- + Hardware and software from a single source
- + Customizable colors according to CI
- + Robust aluminum housing
- + Single-sided or double-sided display
- + Indoor and outdoor use
- + Easy-to-use composer software for presentations, videos, audio or RSS feeds
- + Dynamic content playback and easy programming
- + Control multiple displays from a single PC
- + Integrated PC with latest Intel Core processor
- + Large product portfolio from displays to video walls

CUSTOMIZABLE COLOR

USER-FRIENDLY CONTENT CREATION:  
Video, audio, slideshow, RSS-Feed (news),  
tv, streaming, etc.

SINGLE-SIDED

DOUBLE-SIDED







# Safety Barriers

## REFLEX

High-quality reflex-protections for industry and terminals are indispensable wherever man and machine move in the immediate vicinity. Reflex combines tested quality with simple and fast assembly of modular components, maintenance and cleaning.

The large selection of Reflex profiles in different protection classes offer airports an ideal solution for different areas. The protections are applied on the apron and create a reliable separation between walkways and supply roads. Protection of masonry in exposed areas, light poles on the apron or equipment parking areas are safely separated by reflective profiles.

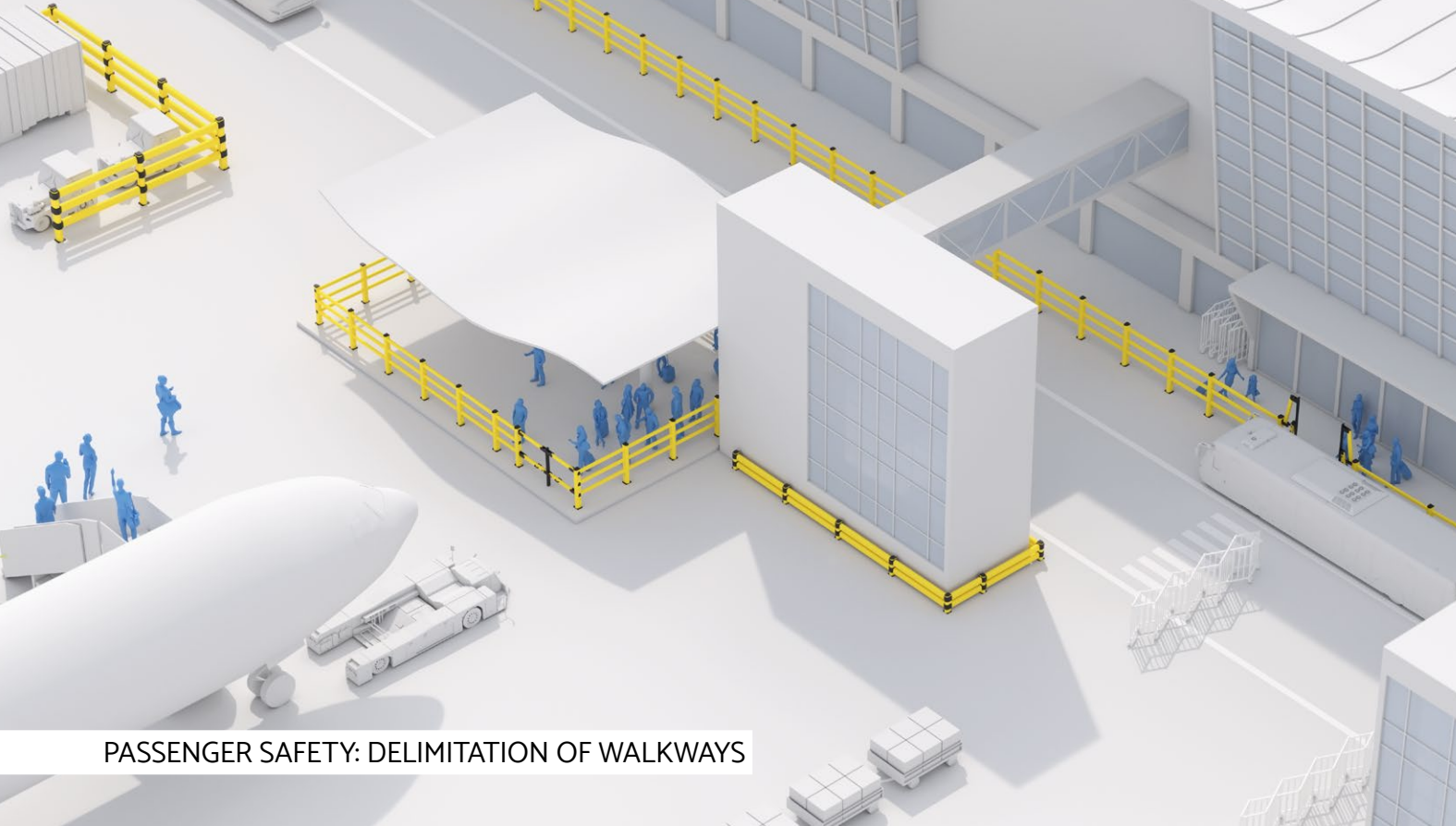
Thanks to their self-extinguishing material (class VO) and acid resistance, Reflex profiles are suitable for all businesses and areas where high-quality protection is required.

### THE FEATURES AT A GLANCE:

- + Quick and easy installation and cleaning
- + Self-extinguishing material class VO
- + High impact resistance (over PA6)
- + Intelligent design with large impact surface
- + High elasticity and dimensional stability
- + Resistant to saline solutions, alcohol, acids and moulds
- + Waterproof material and rapid drainage of the liquid
- + 100% recyclable
- + UV and color resistant







PASSENGER SAFETY: DELIMITATION OF WALKWAYS



PASSENGER SAFETY: DELIMITATION OF AREAS

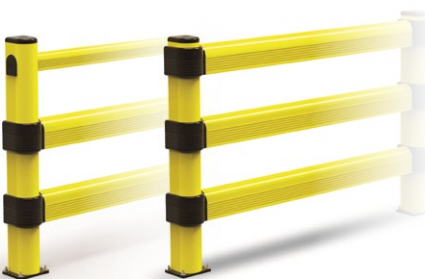
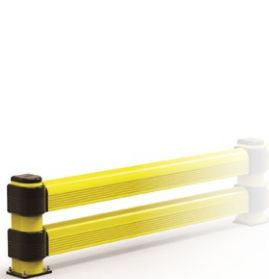
LINK LM

LINK 2

LINK 3

PED 90

PED 150



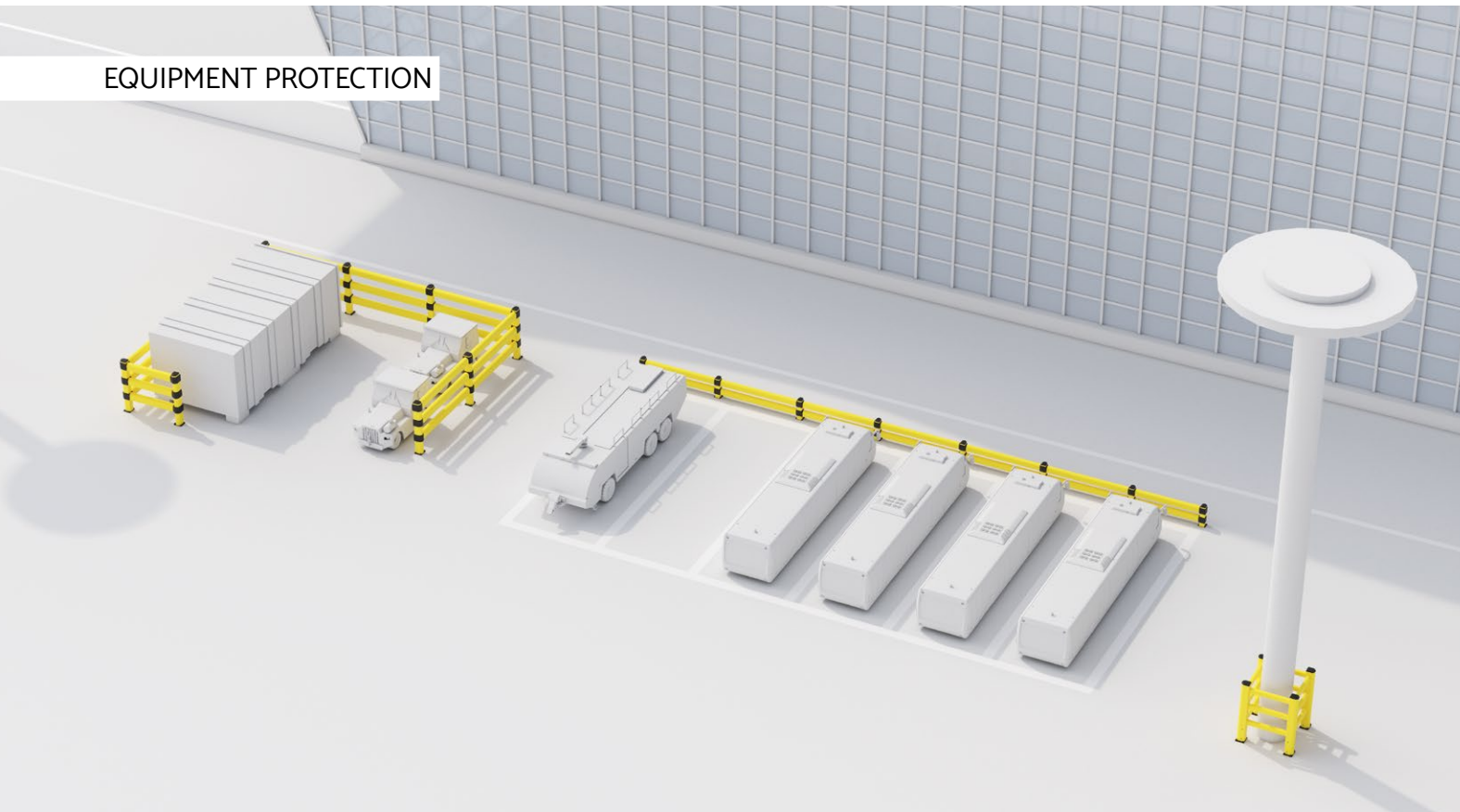
LIFT GATE

JETRAC

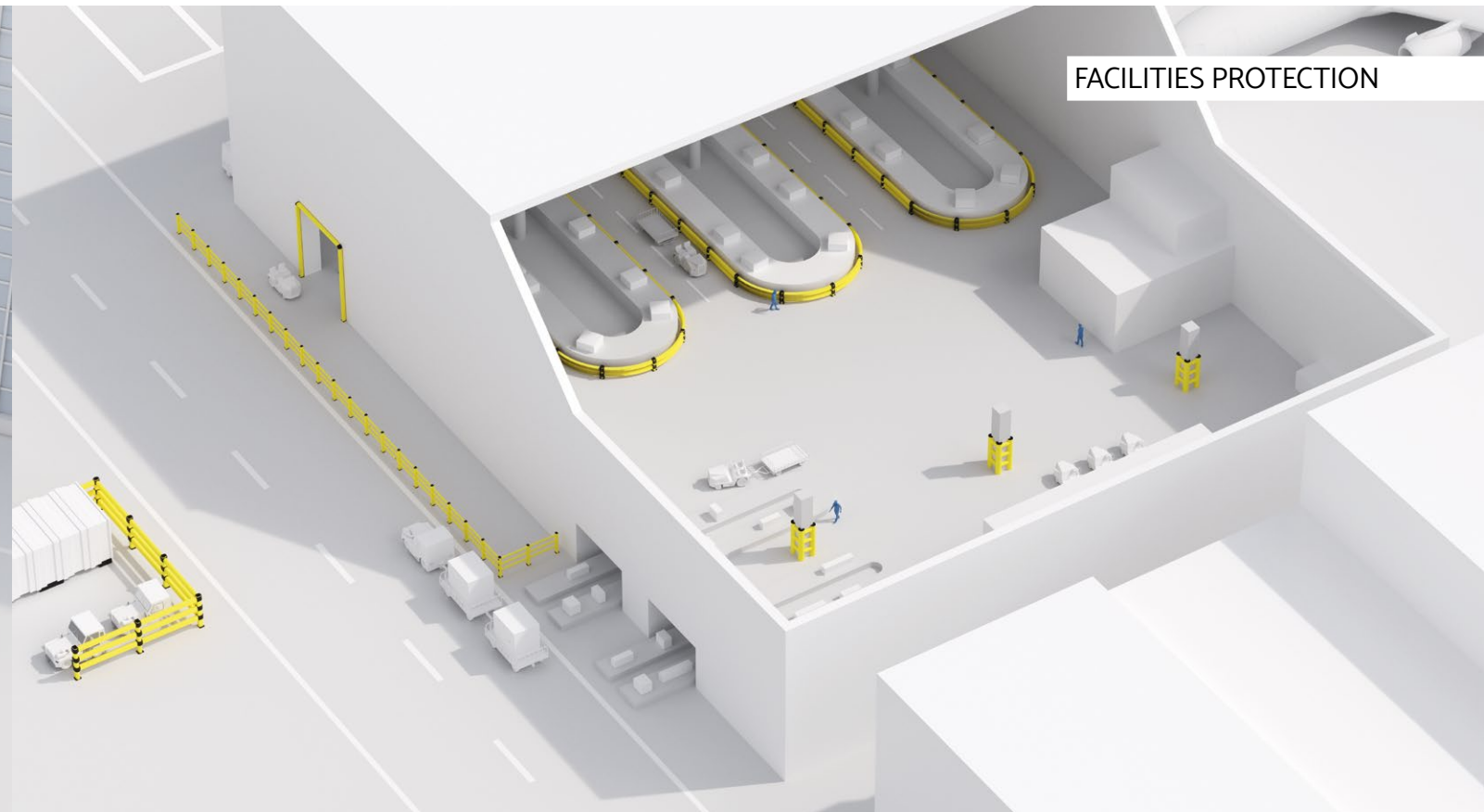
TOWER



EQUIPMENT PROTECTION



FACILITIES PROTECTION







# Workplace Safety



SKIPPER

Wherever people and machines come together, the compliance of occupational health and safety is a top priority.

Skipper's integrated solutions are recognized as the industry standard in security management and can connect to any interface. The extensive range of versatile products includes solutions for outdoor and indoor use as well as safety and waste management.

The modular and multifunctional product line can be individually adapted to the requirements of a wide range of applications. A wide range of patented products and accessories limits the risk of hazards and thus contributes to more safety in the workplace - production, logistics, and assembly.

Versatility, easy to use, and high compatibility make the modular barrier system the most popular product of its kind in security matters. No other product on the market offers the same level of value and versatility.

## THE FEATURES AT A GLANCE:

- + Modular system
- + Multifunctional in its application
- + Indoor and outdoor use
- + Any combination of accessories possible
- + Attachment to different surfaces
- + Can be used in various applications



## Products for outdoors



Belt unit



Post & base system



Road cone



Rechargeable safety light

## Products for indoors



Belt XS unit



Clamp holder/receiver



Suction pad holder/receiver



Magnetic cord strap holder/receiver

## Products for waste & safety management



Recycle bin



Safety dispenser



Suction pad support bracket



Post & base collar



# Airport safety



## MORE SAFETY AND SECURITY WITH HIGH-EFFICIENCY TECHNICAL SOLUTIONS (EU REGULATION N.139/2014 (EASA ADR.OPS.B.075))

Airport safety plays a fundamentally important role in aviation traffic and requires different expertise and a combination of important technical services. Therefore, a series of technological procedures and innovations have been created to support the authorities and comply with international standards.

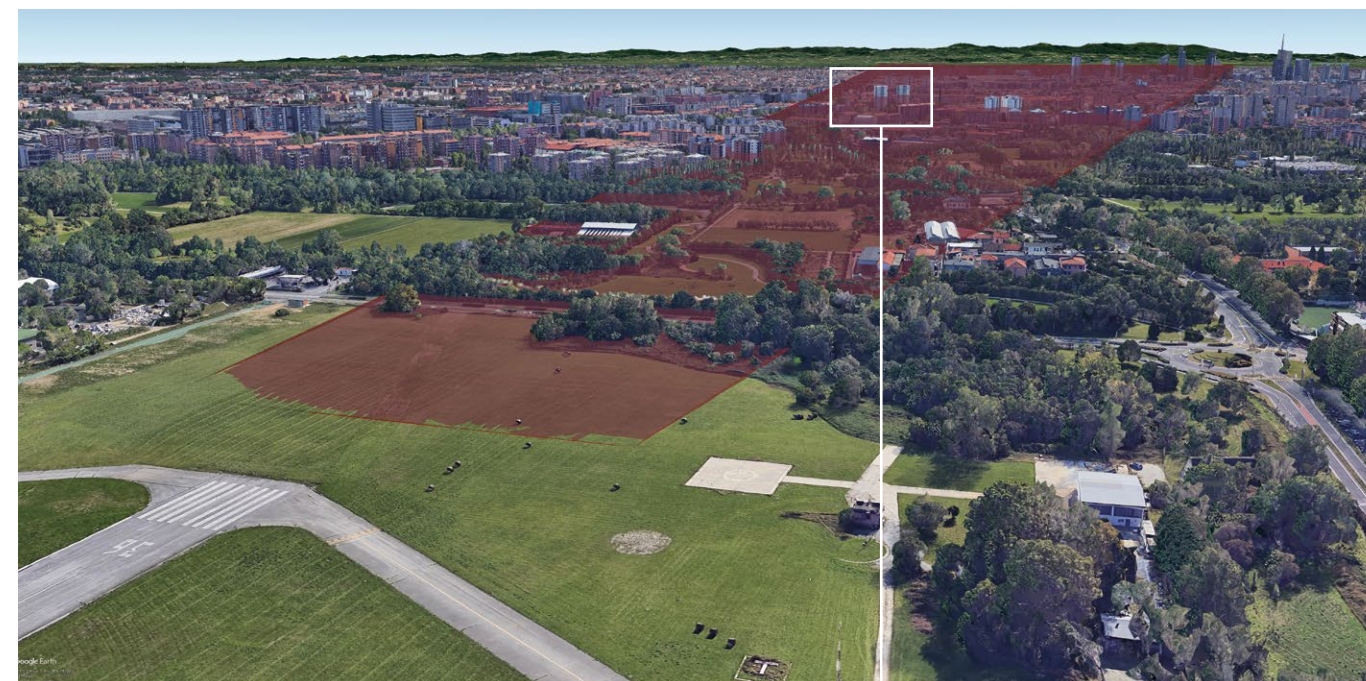
With specialized aerodrome and obstacle mapping software, a wide range of services and solutions are provided, meeting the required international standards, ICAO and EASA regulations.

Services for airport safety involve: air navigation obstacles identification, elaboration of aerodrome chart type "A" and "B" and the implementation of 3D Geographic Information Systems.

Many of the most important national Italian civil and military airports are already using the technology and support the airfield managers throughout the entire procedural processes.

### KEY FACTS:

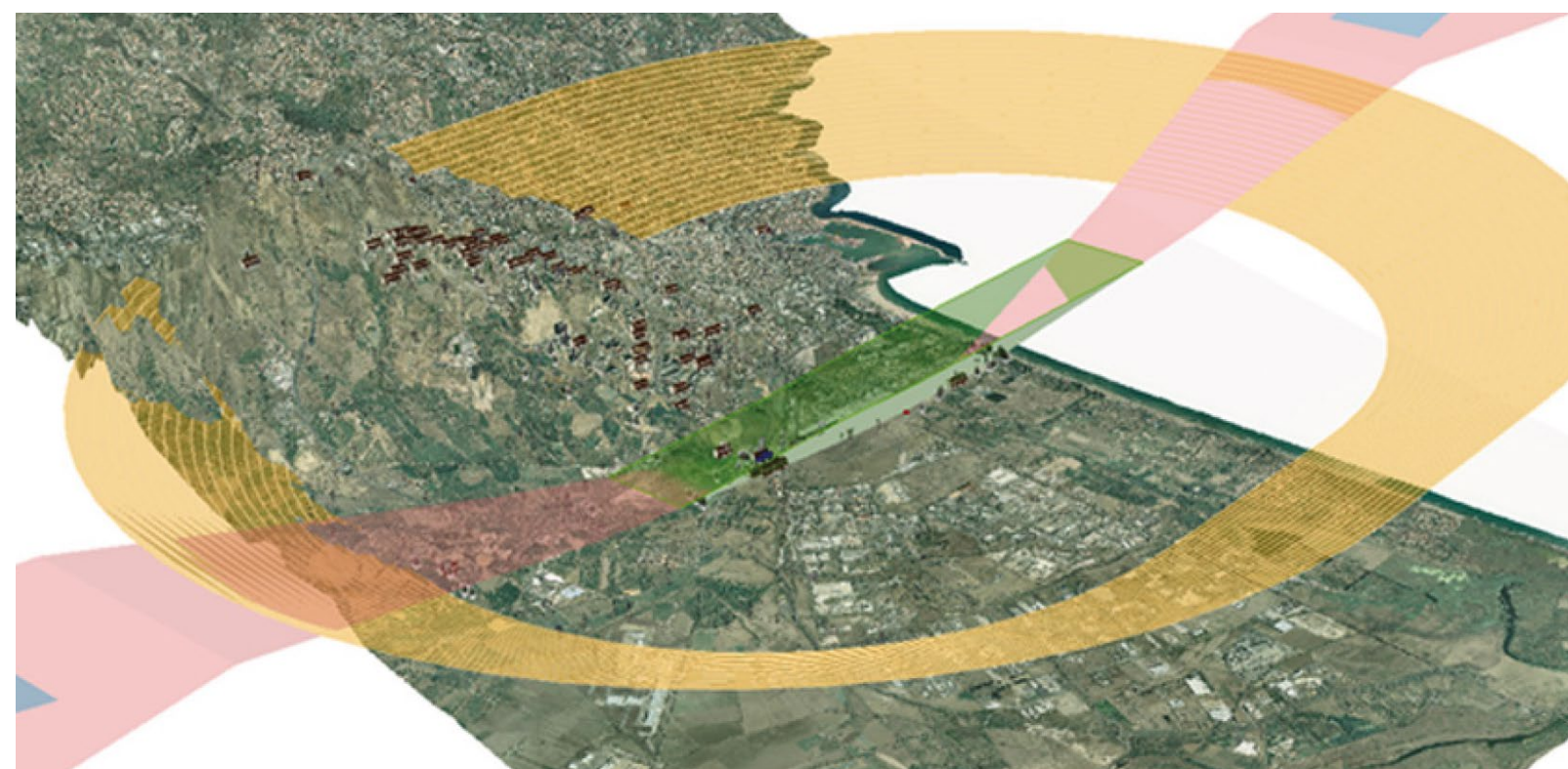
- + Generation of boundary areas and identification surfaces (in compliance with **EASA CS-ADR-DSN**)
- + Identification of potential air obstacles by using high-precision GPS survey, numerical cartography, satellite images, aerial photogrammetric survey, **LiDAR** mapping campaign, creation of digital **DSM** and **DTM** model.
- + Monitoring areas around the airport (surroundings)
- + Identification of obstacles, use of hazardous lights, possibility of induced turbulence, dazzling caused by highly reflective surfaces under **EU regulation n.139/2014 (EASA ADR.OPS.B.075)**
- + 3D Geographic Information System with implementation of Electronic terrain and obstacles data **eTOD**.
- + Maps elaboration of chart type "A" and "B" and obstacles delimitation
- + Satellite images to monitor wildlife strike hazard (**AESA ADR. OPS.B.020**)
- + Automatic detection of night time device failure for real-time monitoring (**Reg. EU 139/2014**)



Monitoring of aerodrome surroundings



Implementation of the Electronic Terrain and Obstacles Data eTOD







# Mobile walls

G40

Terminals are a perpetual construction site. They are constantly being modernized, rebuilt and extended. With all these changes, one thing remains constant: construction work must be as inconspicuous as possible and shielded from airport operations.

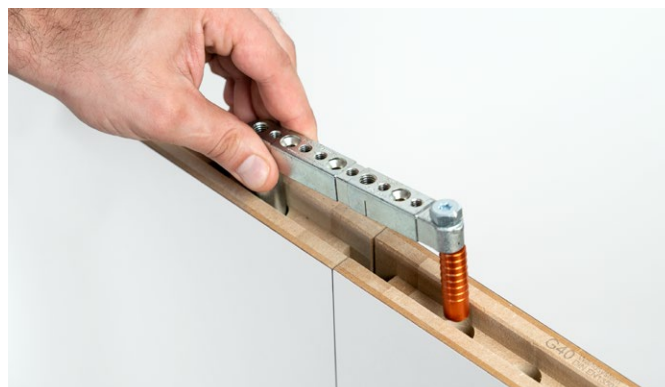
Dry partition walls (plasterboard or other) have been the typical implementation protection. However, they are used as an expendable solution and disposed of at the end.

The G40 modular solution is more practical, cleaner, and above all, more sustainable. The lightweight partition walls can be assembled quickly, dismantled and reused just as quickly and easily after use, which immediately amortizes the acquisition costs.

While conventional walls are disposed of after only one use, the mobile solution is still available for many other installations so, that money can be earned from the second installation onwards.

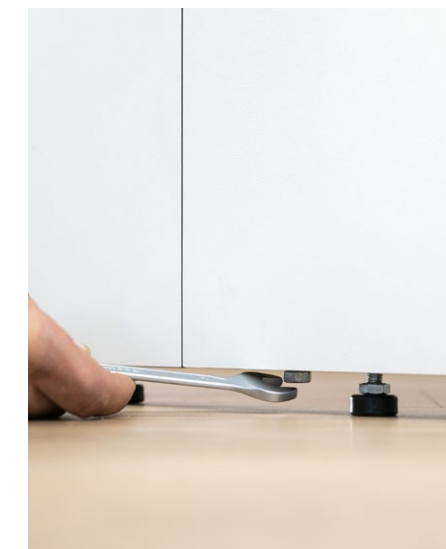
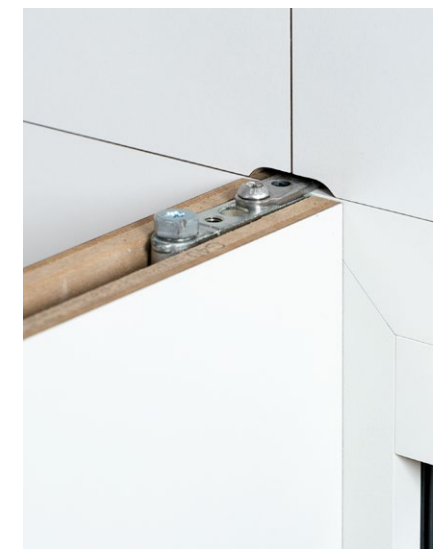
## THE FEATURES AT A GLANCE:

- + Ecological modular lightweight wall systems
- + Fire protection certification
- + Easy transport and storage
- + High quality materials
- + Simple and time-saving assembly and disassembly
- + Stability even with high walls
- + Any size arrangement
- + Installation of door elements
- + Cost-effective solution thanks to reuse
- + Waste avoidance



Hinge angle infinitely variable 0-180°

Easy height adjustment



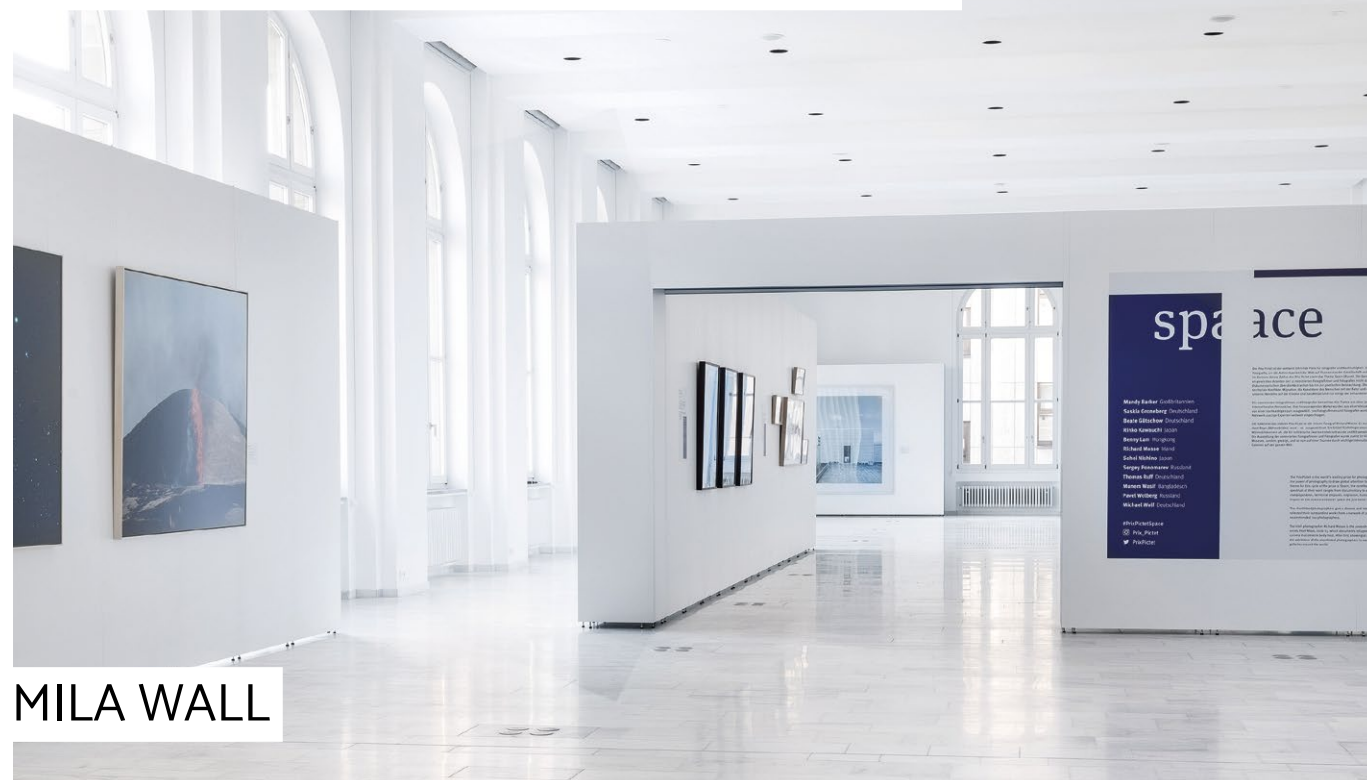
Extendable in height and width







# Mobile museum walls



MILA WALL

More often than not, when displaying a presentation, the design of the space can be the most alluring aspect. With the Mila-wall, a long-term product has been created that is impressive in many respects.

Sturdy, modular, lightweight panels can be set up quickly and precisely in any size or shape as often as required. The ideal and flexible solution for changing exhibition layouts.

Thanks to precise connection technology, the individual modules can be assembled into a new room structure in just a few minutes, regardless of shape, angle or radius.

The robust all-round aluminum profile frame provides effective edge protection and gives the product its longevity. Numerous extras can be integrated into the high-class product: Loudspeakers, alarm protection, sound absorption, lighting, interactive displays, door elements, windows or showcases, as well as many other individual products.

The recycled grey cardboard inside the wall modules make the product remarkably light and offers high stability at the same time. If required, panels with a flame-retardant coating and appropriate fire protection certification are also available. With a self-adhesive, peelable surface foil, new color accents can be set in just a few minutes and the product can appear with a new look.

## THE ADVANTAGES AT A GLANCE:

- + Durable, recyclable materials
- + High stability thanks to aluminum frame
- + Fast assembly and disassembly
- + Virtually no packaging waste
- + Different sizes and shapes
- + Individual design
- + Flame retardant
- + TÜV-certified





# Public seating



AERIS

The Milan-based company Tecno is one of the leading manufacturers of furniture for highly-frequented facilities. Together with world-renowned architects and designers, Tecno creates independent and functional design in a class of its own.

With the “Public Seating” project, Tecno has developed and produced for train and underground stations, airports, waiting areas, as well as for museums and other public facilities.

Together with Studio Grimshaw, Tecno has designed the “Aeris” product line especially for airports. The characteristic and modular structure allows up to five seats to be arranged side by side with cantilevers.

The seat shells can be ordered in polyurethane, plywood or metal and always guarantee maximum seating comfort. As an option, Aeris can be equipped with charging stations for smartphones, USB ports and an integrated seat occupancy sensor. This makes the product one of the most advanced seating structures on the market.

## THE FEATURES AT A GLANCE:

- + Products for highly-frequented areas
- + Qualitative products with international certifications
- + Self-extinguishing and environmentally friendly materials
- + Modular Systems
- + Easy maintenance and minimum number of components
- + Technology and real-time measurement of occupied chairs



COMFORT



BACKLESS



CHAISE LONGUE





# LED projectors

PHOS



Passenger terminals with their spacious structure are ideal as a place to convey advertising messages in addition to their actual purpose. Travelers often spend a lot of time inactively waiting and are therefore easily attracted to advertising.

Large-scale banner advertising is quite complex to produce, requires a mounting frame, professional assembly and often a lifting platform.

The Phos high-performance projectors offer an alternative and cost-effective solution. They are equipped with high-quality and durable LED light sources and can project advertising messages, as well as any other kind of information on the wall, floor or ceiling.

Even larger and hard-to-reach areas in the terminal area can be illuminated with the compact projection spotlights for over 35,000 hours. The result is impressive: extraordinary sharpness and uniform brightness distribution with extremely low energy consumption.



## THE FEATURES AT A GLANCE:

- + LED light sources with 35,000 operating hours (L70)
- + Low energy consumption with high luminous efficacy
- + Environmentally friendly and sustainable
- + Simple and clear design with small dimensions
- + Various mounting and alignment options
- + Quick and easy exchange of gobos
- + Ideal for information, advertising, signposts
- + Projectors for indoor and outdoor use
- + Low sensory overload due to static images
- + Cost-effective design of individual projection motifs
- + Long-term cost reduction through LED light sources







Whether it is an airport, museum, bank or any kind of public institution, security always plays a central role. Common solutions include mechanical systems or other identification systems. With the intelligent locking and access controls by Simons Voss, a perfect solution has been established for tailor-made access, protocol, control, recording and monitoring functions that combine a large number of intelligent components.

The cable-free system eliminates the need for time-consuming installation of power cables. The digital locking cylinder works by pushing a button with a transponder, RFID card or smartphone. A key is never needed. It is widely programmable and can be easily integrated just like a conventional locking cylinder.

The intelligent solution is not only simple and practical, but also extremely secure. The sensors are integrated inside the cylinder. The SmartHandle monitors and registers all status changes and transmits them to the central system in real time.

This makes digital locking systems not only more practical than conventional systems, but also more secure and considerably more economical.

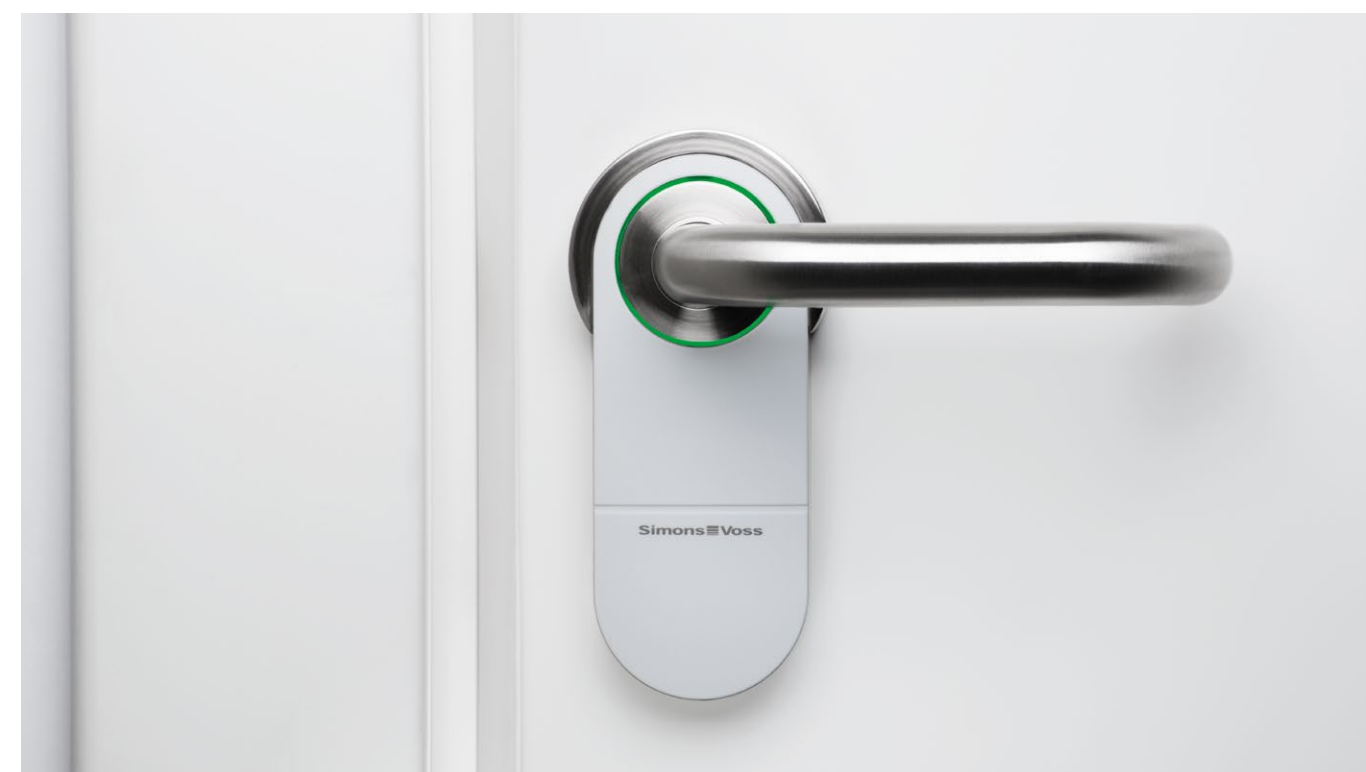
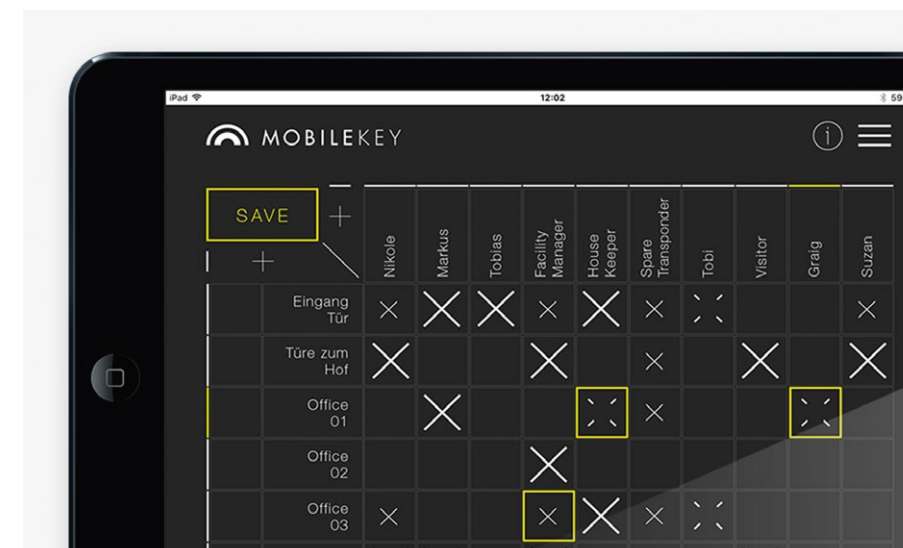
#### THE ADVANTAGES AT A GLANCE:

- + High security thanks to first-class systems
- + Overview of inputs and outputs in real time
- + Wireless installation
- + Battery-operated system with life span of 400,000 + movements
- + One access medium for many doors
- + Robust system with quality "Made in Germany"
- + Hardware and software in one



Transponder for digital locking system

Real-time information on tablet or smartphone







[www.terminalplus.eu](http://www.terminalplus.eu)

[info@terminalplus.eu](mailto:info@terminalplus.eu)

+39 345 386 1685

+39 340 603 6287

Bocek Martin & CO Sas

Via Bolzano, 78

39011 Lana, Italy

